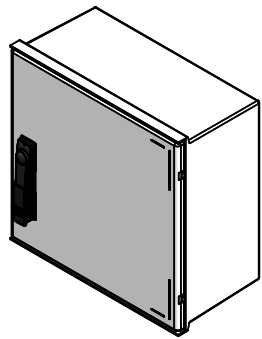
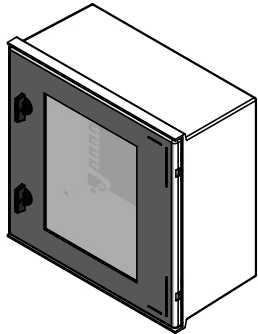


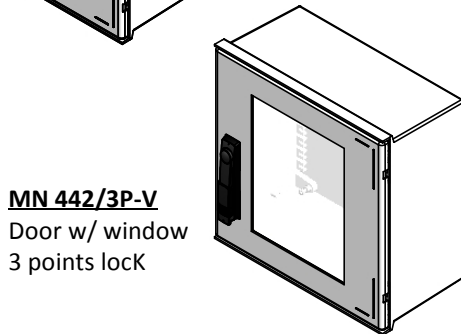
MN 442
Plain door
2 points lock



MN 442/3P
Plain door
3 points lock



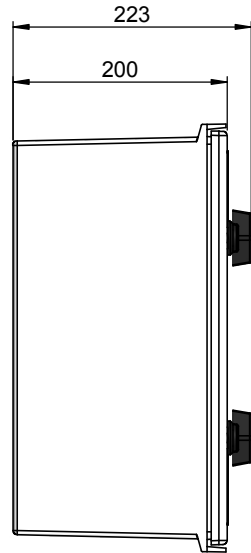
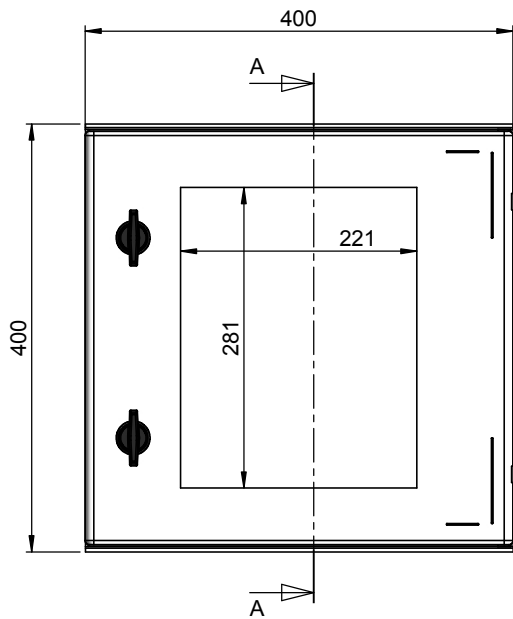
MN 442-V
Door w/ window
2 points lock



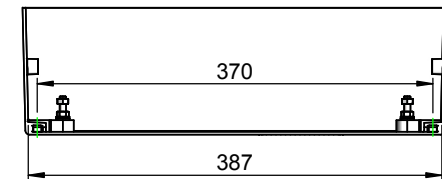
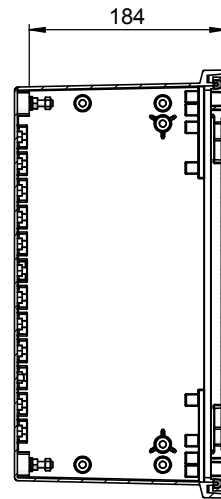
MN 442/3P-V
Door w/ window
3 points lock

2 points locks Serrure 2 points Cerraduras 2 puntos					
		Double bit lock 3.0mm Double-barre DIN 3.0mm Doble barra DIN 3.0mm	Triangular screw 11mm Triangulaire 11mm	Manual with key lock à clé avec barillet Manual con llave	
Plain/Pleine/Plana	MN 442	06PF440001	06PF440021	06PF440031	
Window/Hublot/Ventana	MN 442-V	06PF440003	06PF440023	06PF440033	

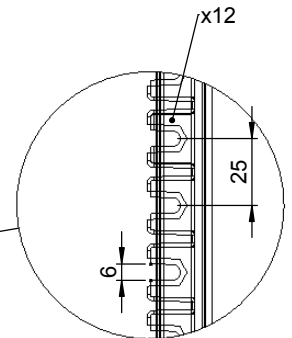
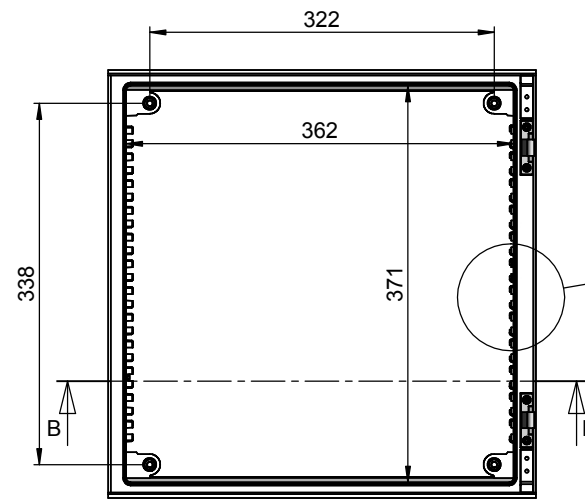
3 points locks Serrure 3 points Cerraduras 3 puntos					
		Double bit lock Double barre DIN 3mm Cierre doble barra	Cylinder & key locked à clé avec barillet con bombin y llave	without cylinder & key sans barillet sin bombin	Triangular 11mm Triangulaire 11mm Triángulo de 11mm
Plain/Pleine/Plana	MN 442/3P	06PF440002	06PF440072	06PF440082	06PF440092
Window/Hublot/Ventana	MN 442/3P -V	06PF440004	06PF440074	06PF440084	06PF440094



SECTION A-A



SECTION B-B



DETAIL C

- Envolvente de Poliéster (SMC), color RAL7035.
- Coffret de Polyester (SMC), couleur RAL7035.
- Polyester box (SMC), colour RAL7035.
- IP66 / IK10 / IK08 (w/ window / avec hublot / con ventana)

Certificado de Empresa AENOR 1990/0035/ER/01
 DIBUJADO: HOJA Nº
 JSO: 1/1
 FECHA: 08-04-2016

MINIPOL 442 RANGE



FICHA Nº

FTM10279